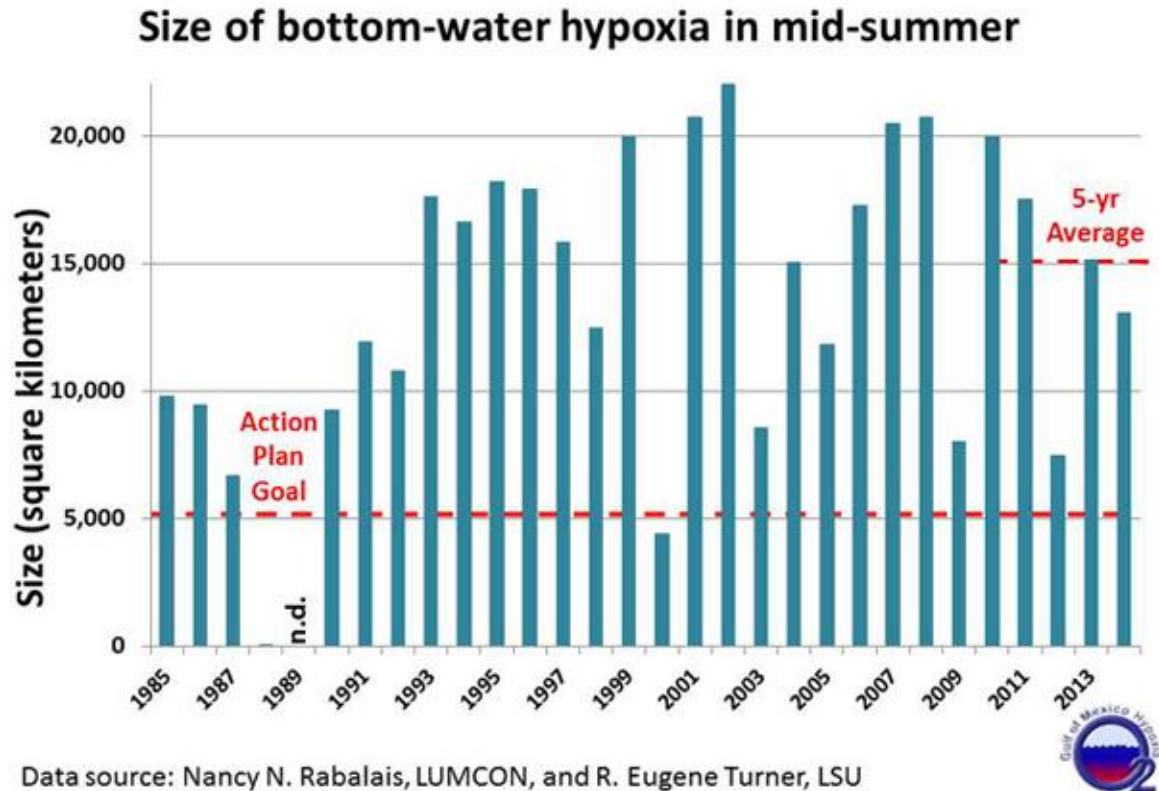


Interannual variation of hypoxic zone



Data source: Nancy N. Rabalais, LUMCON, and R. Eugene Turner, LSU

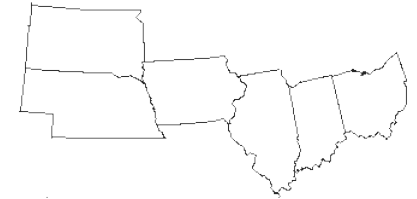
Funding sources: NOAA Center for Sponsored Coastal Ocean Research and U.S. EPA Gulf of Mexico Program



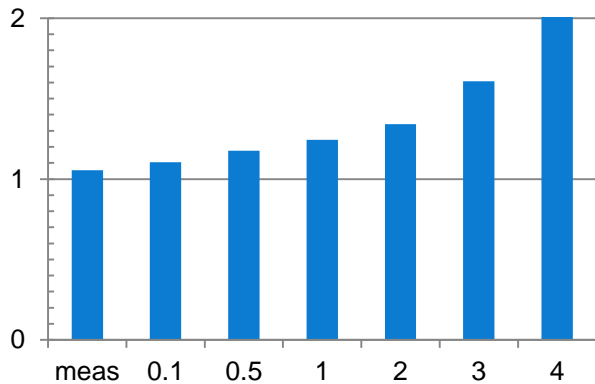
Hypoxic zone extent is correlated with Corn Belt precipitation in late autumn and spring: $r^2 = 0.68$. (Donner and Scavia 2007).

Heavy rainfall has become much more frequent despite only a small change in total rainfall

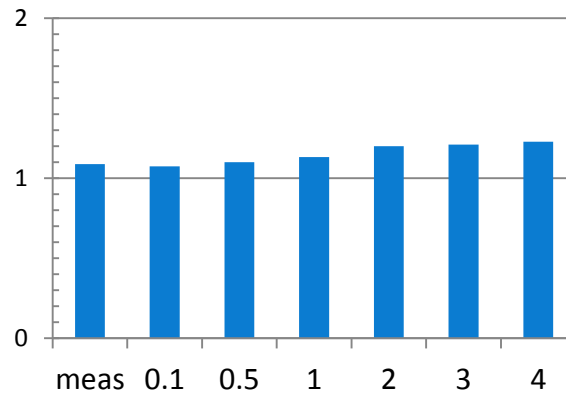
Ratio of frequency in 1981-2010 versus 1951-1980 for each daily threshold (inches).



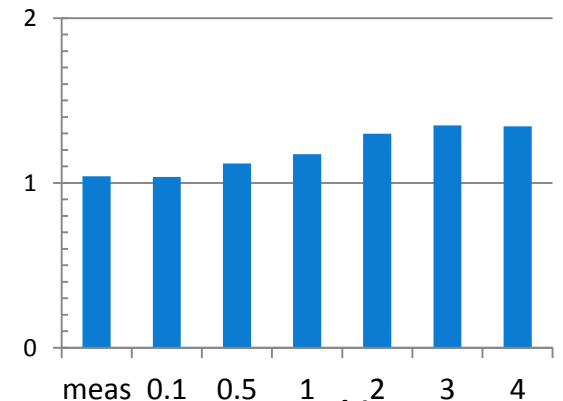
South Dakota



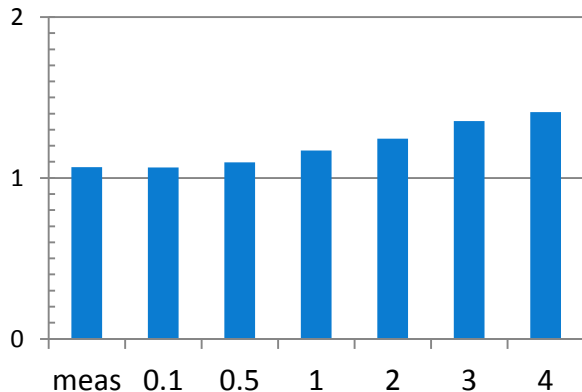
Iowa



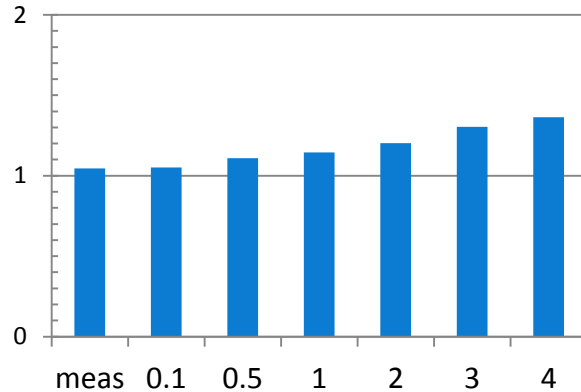
Indiana



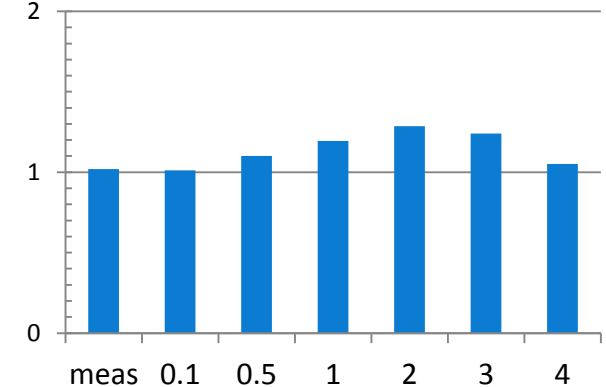
Nebraska



Illinois



Ohio



Data source: NWS Cooperative Observer network.